



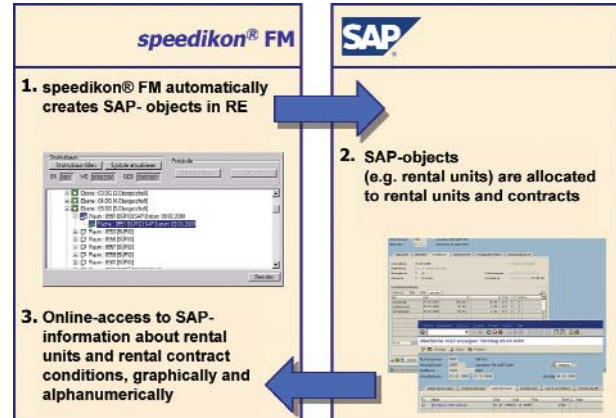
■ Visualisation

A company has to have an overview and graphical control over the extent to which the capacity of its buildings is being used and of the current lease situation. For this purpose, individual spaces and areas which are situated in different places of the building can be graphically combined to one unit and rented collectively. For a task like this, the graphical orientation in the buildings is essential.

The integration of SAP data from SAP/RE in speedikon® FM allows the graphical visualisation of the alphanumeric SAP database including rental areas and rental units.

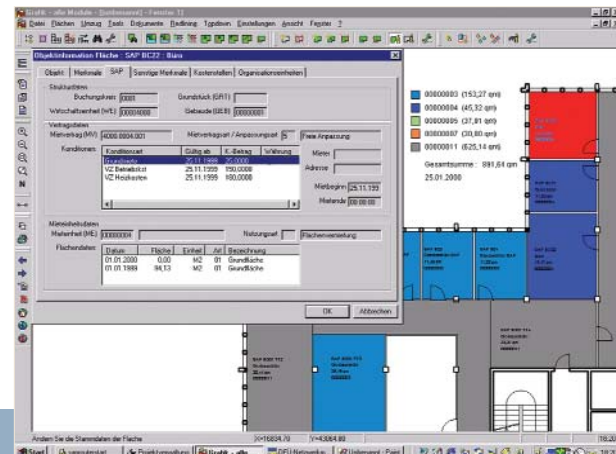
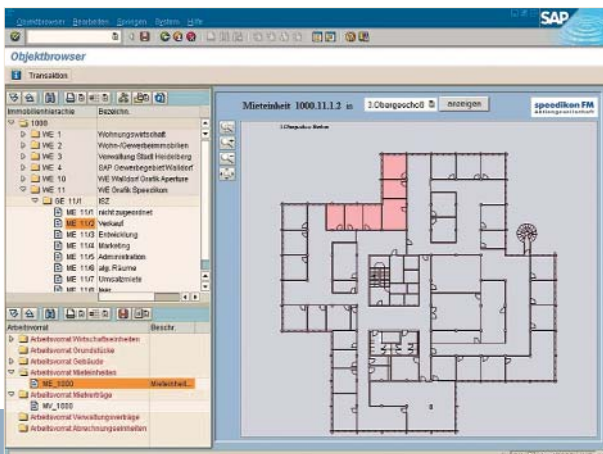
■ Processes

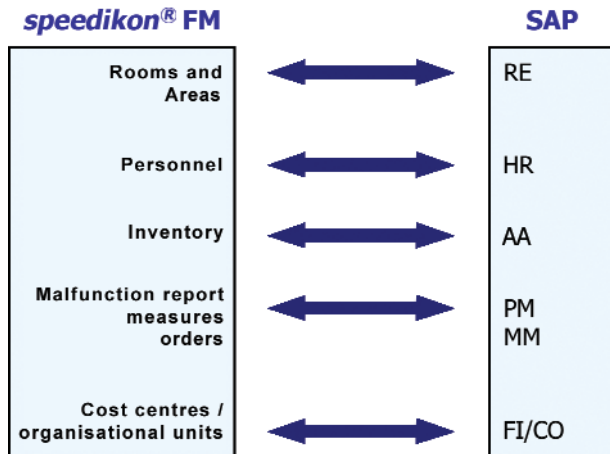
speedikon® FM combines technical tasks like maintenance and space management with the accounting tasks of SAP. The data on tenants and rental contracts is entered into and processed the SAP system. speedikon® FM visualises the occupancy of rooms and transfers the up-to-date area information to SAP. Thanks to the bidirectional interfacing of both systems, terms and conditions of rental contracts are accessible without redundant data storage. It is possible to access the web-based speedikon® FM graphics via the SAP system.



■ Data exchange

Using ASCII interfaces data can be exchanged between speedikon® FM and SAP at regular intervals at defined points in time. Tools automatically adjust data stored in speedikon® FM at regular intervals. This applies also to the transfer of debit positions created in various modules of speedikon® FM to object accounts or cost centres. The speedikon® FM conference room reservation module transfers debit positions arising from room rental and services to SAP on a monthly basis. When exchanging information between the two systems, it is essential to define which is to be the leading system for the data and which data and properties are to be exchanged.





Online interface

- based on standard RFC/BAPI
- precondition is a permanent connection between SAP and speedikon® FM systems
- bidirectional data and object exchange
- direct link of CAFM objects to SAP objects
- both systems have bidirectional access to any information stored in the respective other system
- data is being updated in both systems
- authorisation concept of SAP system determines access authorisation to SAP data in the FM system

ASCII interface

- input and output on basis of batch files
- data synchronisation between SAP and speedikon® FM at regular intervals and/or initiated manually
- bidirectional data exchange
- data synchronisation can take process ends into account
- implementation of complex aggregation and adjusting mechanisms on the basis of definable rules

