

■ Data import

The basic module contains a number of core functions of *speedikon*® FM. These functions are available throughout the system.

The first step when setting up the CAFM solution is integrating the real estate structure into the system management. This structure can be defined according to individual demands. As different structures can be kept in parallel in the system, any corporate structure can be mapped very well.

The second step is filling the system with data. To import CAD data in a range of formats a process-controlled import tool is available. This tool facilitates the import of individual plans as well as packets of plans. Depending on the quality of the plan data the system enables the import not only of the base graphics of the plan but also automatically generates rooms and areas and the respective attributes.

The integrated internal graphic format allows the import of different input formats such as DWG, DXF and DGN as well as pixel formats and scanned drawings. If the CAD system is the leading system for construction and room data, it is possible to use referencing to the original CAD graphics.

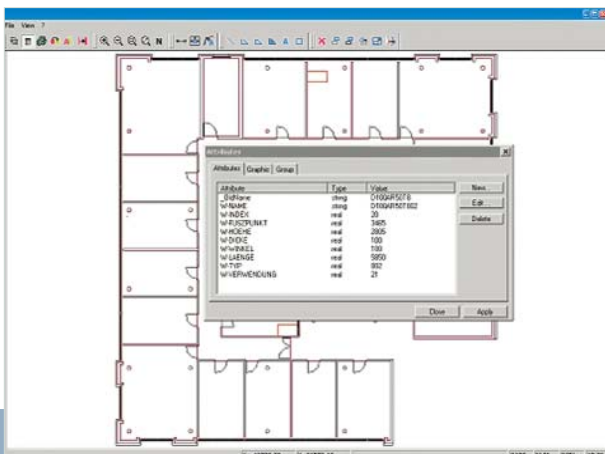
Alphanumerical data is imported into the system from Excel or Access tables or other ASCII formats via the integrated so-called general import. This tool supports all phases of the import.

The system allows the user to work simultaneously on different projects allowing the planning of variants and thus efficiently supporting the move management process.

With the help of Atlantis customer specific furniture or symbol catalogues are integrated into the system. Individual frame models for printing drawings can be defined for all graphical modules.

■ User management

The access to *speedikon*® FM is controlled by user profiles. These profiles differ on the function level as well as on the data level. The user management creates users with the corresponding user profile. Profiles may be created module specifically. Thus the user is not burdened with functions and data he does not need. Thus, the user is able to learn quickly how to use the system and to carry out his daily tasks efficiently.





Basic module

The basic module is the basis for all application modules within the *speedikon®* FM solution portfolio. The purchase of any application module includes the licence for the basic module.

- user and project manager
- creating and modifying graphical and alphanumerical objects
- free definition of object and attribute structures
- comprehensive catalogues of predefined object types
- free definition of object types
- free order of index cards in the object information
- flexible arrangement of building structures
- provision of multi-level and flexible catalogue structures
- alphanumerical search engine
- import and linking of graphical data
- system adjustments

User management

- creation of users by free entry or by copying of templates
- allocation of user profiles on the levels of modules, functions, data and properties
- disabling of users
- management of passwords including change documentation

Graphical import

- input filter to import and to reference CAD-drawings
- vector formats DXF, DWG, DGN
- pixel formats BMP and TIF
- recognition and summary of layer structures
- analyses of object structures and object attributes
- automatic recognition and transfer of polygons

Alphanumerical import

- import assistant to create and modify objects and catalogues
- import assistant to create and modify linkings
- support of general list formats with free field description
- attribute mapping on level of attributes
- integrated consistence checks and adjustment procedures

System management

- definition of system configurations
- configuration of the pilot as well as menus and tool bars in the graphical modules
- definition of layers, object types, object links and structural schemes
- definition of data histories